

# AudioBox™ 22/44VSL





- 1.
- 2.
- 3.
- 4.
- 5.
- 6.
- 7.
- 8.
- 9.

- 10.
- 11.
- 12.

- 13.

( ) .

14.

PreSonus,  
PreSonus

support@presonus.com

www.presonus.com.

15.

16.

RoHS

2011/65/EC

ROHS.

REACH  
EC1907 / 206

(REACH)

0,1%

WEEE



PreSonus.

CE



EMC (2006/95 / )  
(2004/108 / EC).

# AudioBox™ 22/44VSL

## 1.0 — 1

1.1 — 1

1.2 AudioBox 22/44VSL — 2

1.3 Studio One Artist — 2

1.4 Virtual StudioLive — 3

1.5 — 4

## 2.0 — 5

2.1 — 5

2.2 — 7

2.3 — 9

2.4 MIDI — 10

## 3.0 — 11

3.1 — 11

3.2 Windows — 12

3.3 Mac OS X — 14

3.4 AudioBox 22/44VSL — 15

## 4.0 : Virtual StudioLive Studio One Artist — 17

4.1 Virtual StudioLive — 17

4.1.1 Virtual StudioLive: — 17

4.1.2 Virtual StudioLive: — 19

4.1.3 Virtual StudioLive: Overview  
Fat Channel Zoom — 20

4.1.4 VSL: — 21

4.1.5 VSL — 28

4.1.6 VSL — 29

4.2 Studio One Artist — 32

4.2.1 — 32

4.2.2 — 37

4.2.3 MIDI — 38

4.2.4 — 41

4.2.5 — 43

4.2.6 MIDI- — 44

4.2.7 — 45

## 5.0 — 47

5.1 — 47

5.1.1 — 47

5.1.2 — 47

5.1.3 USB — 47

5.1.4 — 48

5.2 — 51

5.2.1 — 51

5.2.2 — 52

5.2.3 : — 56

5.3 — 59

5.3.1 ? — 59

5.3.2 :

— 61

5.3.3 — 64

<b>5.4</b>	-	— 67
5.4.1	—	67
5.4.2	—	67
<b>5.5</b>	—	68
5.5.1	—	68
5.5.2	—	69
5.5.3	—	69

**6.0 — 70**

<b>6.1</b>	AudioBox 22VSL	— 70
<b>6.2</b>	AudioBox 44VSL	— 72

**7.0 — 74**

<b>7.1</b>	—	74
<b>7.2</b>	PreSonus AudioBox	— 75

**— 76**



1.0

1.1



PreSonus Audio Electronics

PreSonus AudioBox™ 22/44VSL.  
AudioBox 22/44VSL

XMAX™

Channel 3- USB 2.0 (2x2/4x4); MIDI / ; Fat

AudioBox 22/44VSL

USB 2.0,

PreSonus AudioBox 22/44VSL,  
1-225-216-7887 9 17

PreSonus Audio Electronics

AudioBox 22 / 44VSL!

AudioBox,

Virtual StudioLive  
SL Remote, Studio One Artist



Virtual StudioLive -

- 
- 
- 
- StudioLive 16.0.2 Fat Channel
- 
- 
- 
- 3-
- 
- 
- 32
- 
- 
- 
- 
- 
- 
- 

drag-and-drop.

Fat Channel

:

Fat Channel



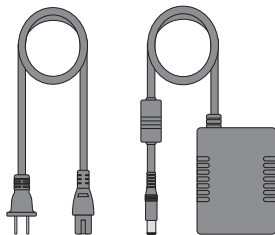
1.5



PreSonus AudioBox 22VSL 44VSL USB 2.0



USB 1,8 (6 6 )



( AudioBox 44VSL)



- DVD- PreSonus Studio One Artist
- CD PreSonus Virtual StudioLive AudioBox



# 2.0

## 2.1



AudioBox 22/44VSL  
PreSonus XMAX™,  
XMAX

AudioBox 22VSL (

AudioBox 44VSL)

1/4"

XLR.

- : TS 1/4" 1 2 ( , - . .).

, AudioBox 22/44VSL

- ( AudioBox 44VSL). 3 4 AudioBox 44VSL 1/4" TRS

CD/DVD ( )

AudioBox 22/44VSL,



AudioBox 22/44VSL.

Virtual StudioLive  
SL Remote, Studio One Artist



48 AudioBox 22/44VSL  
48V.



XLR

- 1 =
- 2 = +48
- 3 = +48



Input Gain/Trim ( / ).

- XLR / TS 1/4" : 80  
( -15/-30 +65/50 )
- TRS 1/4" ( AudioBox 44VSL):  
40 ( -20 +20 )



0 dBFS.

( ).

AudioBox 22/44VSL XMAX™



Mixer ( ).

(playback),

playback

12

Virtual StudioLive,

Mixer

VSL.



Phones ( ). Phones

"11",



Main. Main  
(Main Output),

-80 0



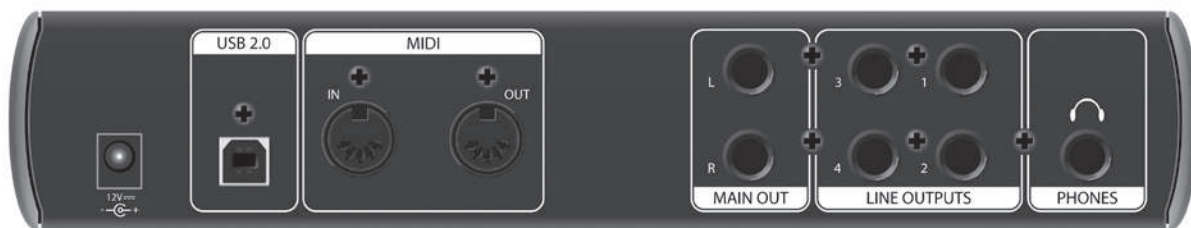
Power (22VSL)/USB Sync (44VSL).

USB 2.0.

AudioBox 44VSL:

USB

2.2



Phones ( ).



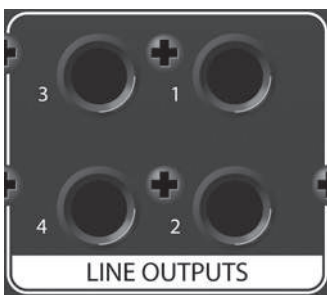
Main Out ( ).

AudioBox 22/44VSL.  
Main,

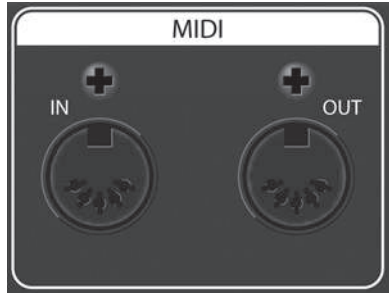


Line Outputs ( ) ( AudioBox 44VSL).

DJ



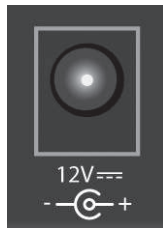
Virtual StudioLive  
SL Remote, Studio One Artist



MIDI I/O ( / ). MIDI  
 ". MIDI  
 MIDI  
 MIDI , MIDI  
 : MIDI  
 MIDI ( , ).  
 MIDI  
 AudioBox 22/44VSL.  
 MIDI

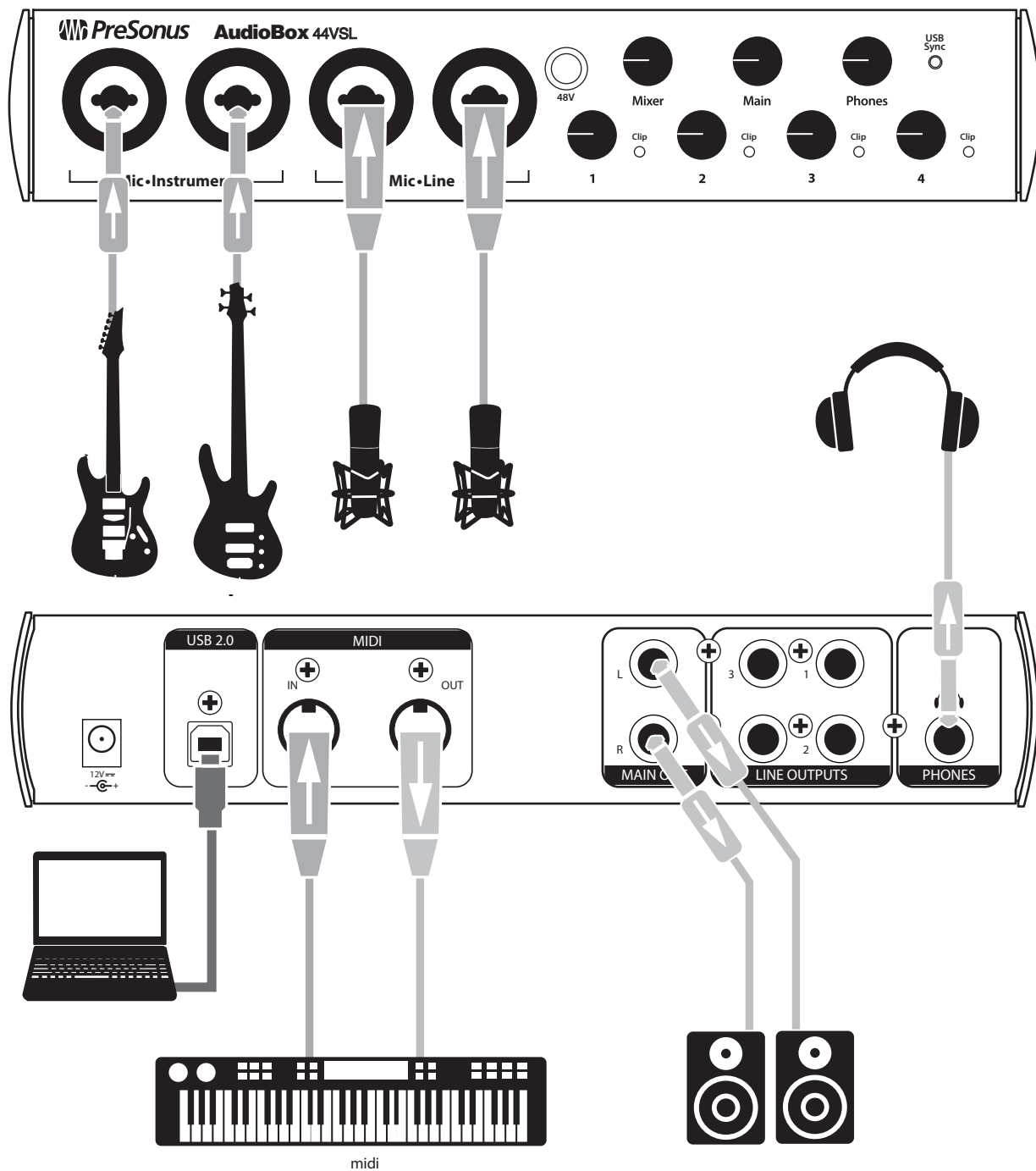


**USB 2.0.**  
 AudioBox 22/44VSL  
 USB,  
**USB**  
 . AudioBox 22VSL



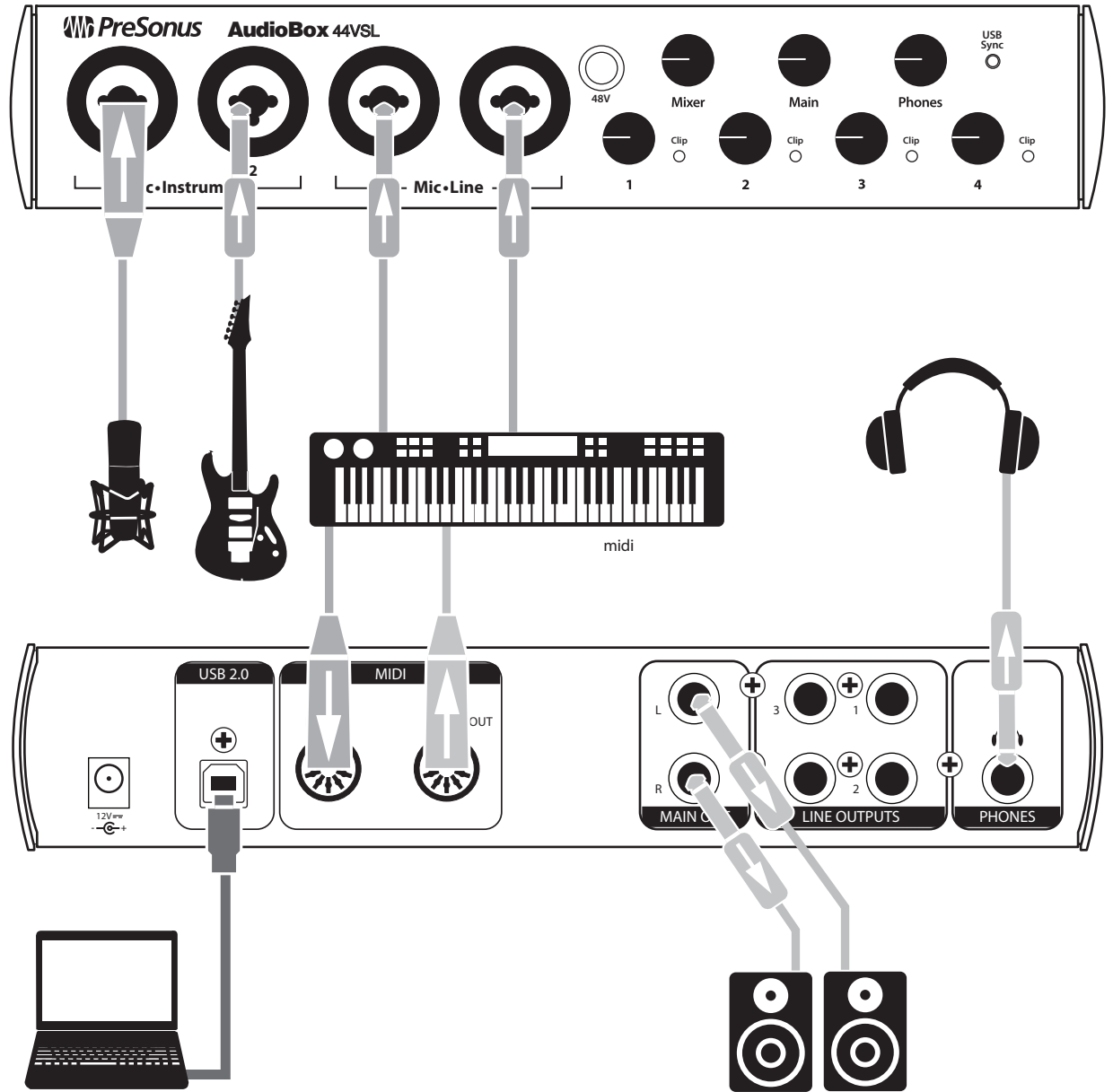
**Power Input (** AudioBox 44VSL).  
 AudioBox 44VSL. AudioBox 44VSL  
 USB.

2.3



Virtual StudioLive  
SL Remote, Studio One Artist

2.4 MIDI



### 3.0

AudioBox 22/44VSL

USB 2.0

### 3.1

PreSonus Studio One Artist and Virtual StudioLive\*.

### Macintosh

- :  
• Mac OS X 10.6
- :  
• : Intel® Core™ Duo, 2 GB RAM  
• : Intel Core 2 Duo Intel iCore  
, 2 GB RAM

### Windows

- (32 64 ):  
• Windows 7, Vista
- :  
• : Intel Core Duo AMD Athlon™ X2, 2 GB RAM  
• : Intel Core 2 Duo AMD Athlon X4  
, 4 GB RAM

\*

[www.presonus.com](http://www.presonus.com)

Virtual StudioLive  
SL Remote, Studio One Artist

3.2 Windows

AudioBox 22/44VSL  
USB 2.0

AudioBox

AudioBox 22/44VSL

CD-

AudioBox,

Windows Vista:

Windows,

" ("Install this driver software anyway").

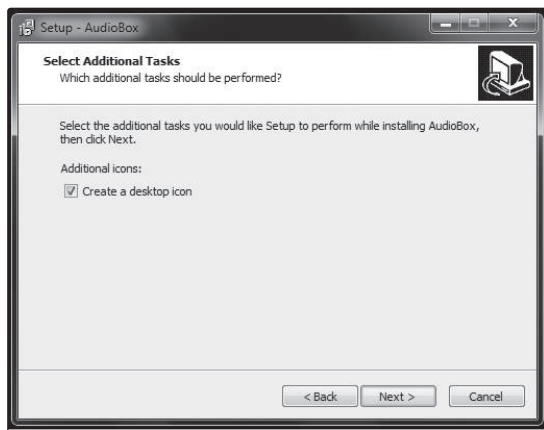


1.



" (Next).

2.

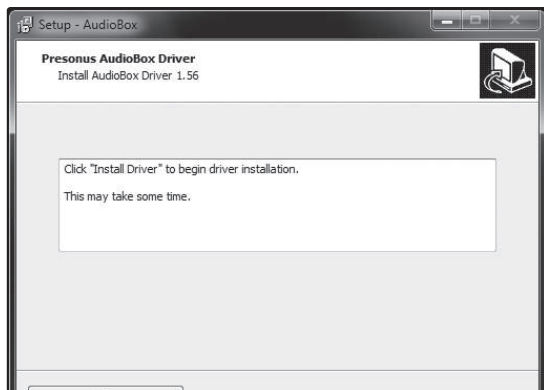


AudioBox Virtual

StudioLive.

" (Next).



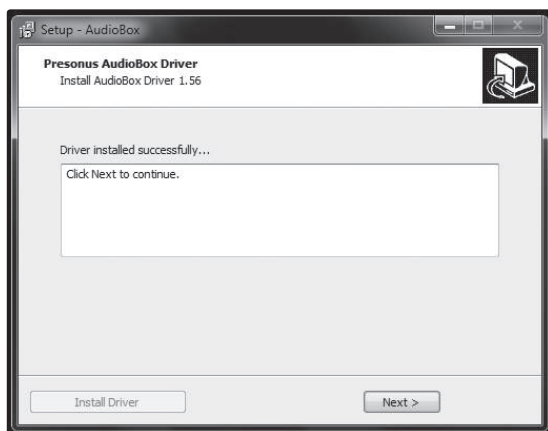


3.

AudioBox,

“Install Driver” (

).



4.

“Next” ( )



5.

“Finish” ( )

6.

22/44VSL

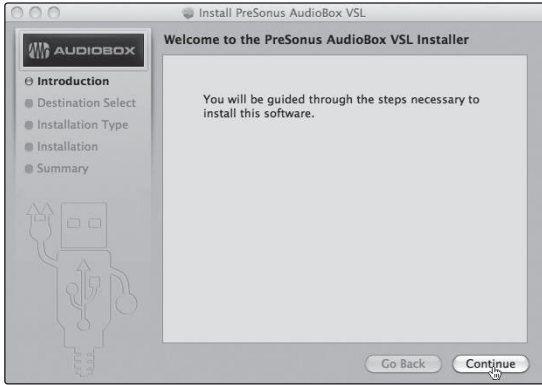
!

AudioBox



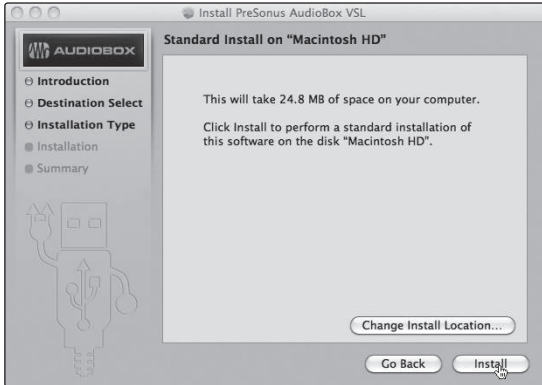
3.3 Mac OS X

AudioBox 22/44VSL,



1.

“Continue” ( )



2.

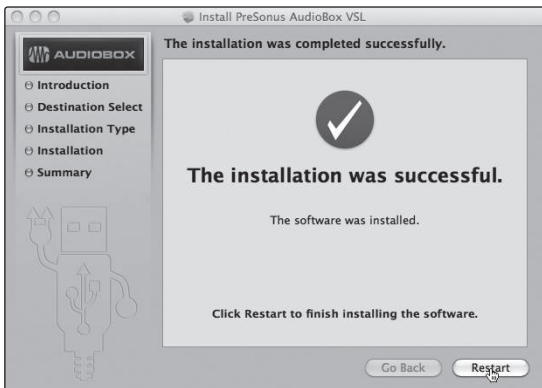
Virtual StudioLive.

(Applications)

AudioBox VSL.

Dock.

“Install” ( ).



3.

22/44VSL

Mac USB

AudioBox

AudioBox 22/44VSL!

Virtual StudioLive  
SL Remote, Studio One Artist

3.4 AudioBox 22/44VSL

Studio One Artist  
5.2  
AudioBox 22/44VSL  
Core Audio ASIO.  
AudioBox 22/44VSL

Apple Logic Pro/Express 7+:

1. Logic Pro/Express.
2. Logic | Preferences | Audio.
3. Devices ( ).
4. Core Audio Enabled ( ).
5. PreSonus AudioBox 22(44)VSL .
6. Logic. "try (re)launch."
7. AudioBox 22/44VSL  
/ . Logic,  
Options | Audio | I/O Labels.
8. "Provided by Driver." ( ,  
).  
AudioBox  
22/44VSL. , .
9. AudioBox 22/44VSL.

Steinberg Cubase 4+

1. Cubase.
2. Devices | Device Setup .
3. Device Setup ( )  
"VST Audio System".
4. PreSonus AudioBox 22(44)VSL ASIO Driver.
5. AudioBox 22/44VSL "Switch"  
( ).
6. ,  
Devices | VST Connections

Virtual StudioLive  
SL Remote, Studio One Artist

**Cakewalk Sonar 6+**

1. Sonar.
2. Options | Audio... Advanced.
3. Driver Mode "ASIO." ( WDM, ASIO, .)
4. "OK".
5. Sonar .
6. Options | Audio... Drivers.
7. , "PreSonus AudioBox 22(44)VSL."
8. Options | Audio... General.
9. , Playback Timing Master  
"PreSonus AudioBox... DAW Out 1."
10. , Recording Timing Master  
"PreSonus AudioBox... Mic/Inst 1."

**Ableton Live 5+**

1. Ableton Live
2. Options | Preferences | Audio.
3. Driver Type ( ): Asio | Audio Device: ASIO PreSonus AudioBox 22(44)VSL
4. Input Config ( ):
5. OutputConfig ( ):
6. AudioBox 22/44VSL  
, Live.

**ProTools 10+**

1. ProTools.
2. Setup | Hardware AudioBox 1818VSL  
Peripherals. OK.
3. Setup | Playback Engine AudioBox 1818VSL  
. OK.



# 4.0 : Virtual StudioLive Studio One Artist

AudioBox 22/44VSL

Studio One™ Artist. Virtual StudioLive™ (VSL)

## 4.1 Virtual StudioLive

Virtual StudioLive -

StudioLive 16.0.2. VSL

Fat Channel VSL

VSL

Fat Channel,  
Fat Channel

AudioBox 22/44/1818VSL.

Mixer

"Do Not Show Again".

"VSL".  
VSL



### 4.1.1 Virtual StudioLive:

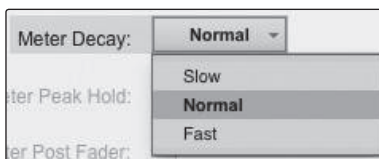


VSL Setup

(user preferences).  
Setup VSL. Setup,

#### Meter Decay

Device Widow.



VSL

Slow Meter

Fast Metering

Normal ( ).

Meter Peak Hold

Meter Peak Hold:

VSL

Meter Post Fader

Meter Post Fader:

VSL

VSL

Run at Startup ( Windows)

Virtual StudioLive.

Run at startup:

VSL

Windows.

Mac

VSL

Dock

Options>Open at Login ( >

VSL

DAW,

Sample Rate ( OS X)

Sample Rate:	48.0 kHz
Performance:	44.1 kHz
	48.0 kHz
	88.2 kHz
	96.0 kHz

44.1, 48, 88.2, 96

AudioBox,

Windows

Performance ( OS X)

VSL

Performance:	Fastest
	Fastest
	Normal
	Safe

VSL

: Fastest

( ), Normal ( ), Safe ( ).

- Fastest: VSL 1
- Normal: VSL 2
- Safe: VSL 4

Normal

Virtual StudioLive  
SL Remote, Studio One Artist

ASIO Buffer Size ( Windows)

ASIO Buffer Size: 64  
 ADAT In Mode: 64  
 ADAT Out Mode: 128, 256, 512, 1024, 2048

2048 64 (44.1 48 ) 128 (88.2 96 )  
 (11-12 ) , 512

Mac

VSL (Windows)

(Mac OS X),  
 ASIO Core Audio.

4.1.2 Virtual StudioLive:

Browser ( VSL ). VSL Studio One.  
 Fat Channel  
 AudioBox 22/44VSL.

SCENE FAT CHANNEL FX

- VSL
- SCENE. Fat Channel (mute) (solo)
- FAT CH. Fat Channel, VSL 50
- FX. VSL 30 PreSonus.

Add New

User Presets - +  
 ALL\_RESET  
 BAS\_Electric1

Add New ( ).



Remove



Add New

Remove.

Show/Hide Browser

/

(

AudioBox 44VSL).



“Hide

Browser”.



“Show

Browser”

VSL.

4.1.3 Virtual StudioLive:

Overview Fat Channel Zoom

VSL

Virtual StudioLive.

VSL,

Overview.

•

•

•

•

AudioBox 44 VSL)

3 4 (

•

solo mute

Fat Channel

•

Fat Channel Zoom

Fat Channel



( Fat Channel Zoom

)



AudioBox 22VSL:



AudioBox 44VSL:



4.1.4

VSL :

VSL -  
 16.0.2

StudioLive

VSL

AudioBox 22/44VSL.

VSL "DAW"  
 (DAW).

DAW

Virtual StudioLive

VSL On/Off

/

VSL



AudioBox

VSL On/ Off

Mixer,

DAW. VSL

VSL

Mixer

"VSL",

---

**Select** **Fat Channel.**

( ) VSL Select. Select DAW, Fat Channel

---

**Solo** " "

, Select

---

**Mute** " "

,

---



(0 ) "U".

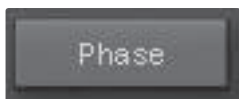


Fat Channel.  
Fat Channel Post,

Phase Reverse

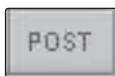


( 180°).



VSL

Post Button



Fat Channel.

Fat Channel.

Post.

Fat Channel

DAW.  
DAW,

Fat Channel ( )

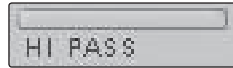
DAW.

Post

VSL

Virtual StudioLive  
SL Remote, Studio One Artist

High Pass Filter Freq



18 1,3

5.3.1.



High Pass Filter

-6 /  
VSL

Gate On/Off



Gate Threshold



Gate Threshold ( )

0 -84

Threshold,

Gate Graph.

Compressor On/Off



Auto Mode



Attack ( ) Release

( )

10 , 150

Threshold



THRESH  
5.12 dB

-56 0

Ratio



RATIO  
2:1

ratio 2:1, 2  
1:1 14:1

Attack



ATTACK  
5 ms

0,2 150

Release



RELEASE  
4 ms

release ( )  
40 1000

Makeup Gain



GAIN  
5.12 dB

Makeup Gain ( )  
Makeup Gain 0 ( ) +28

Limiter On/Off



Limit

(ratio) ∞:1.

0 dBFS.

---

**Equalizer On/Off**



---

**Low EQ On/Off**



---

**Low EQ Frequency**



36 465

---

**Low EQ Gain**



-15 +15

---

**Low Shelf EQ**



Shelf  
Shelf

Center Frequency

---

**Mid EQ On/Off**



Mid EQ Frequency



380 5

Mid EQ Gain



-15 +15

Mid Hi Q



Q -

Q

Q

Q  
0,55.

Hi Q

Q

2,0,

High EQ On/Off



High EQ Frequency



1,4 18

High EQ Gain



-15 +15



### High Shelf EQ



Shelf

Shelf

Center Frequency

### 4.1.5

### VSL

Browser VSL

Browser Studio One.

Disk

Device Memory

Overview

On  
Fat Channel.



VSL

Overview

Fat Channel.

### Fat Channel



Fat Channel ( ,





(Master) Overview.  
 FX Type ( )

4.1.6 VSL

Virtual StudioLive

StudioLive 16.0.2.

Fat Channel,

Virtual StudioLive  
 SL Remote, Studio One Artist

1



VSL

VSL,  
 AudioBox 22/44VSL.

Main Phones,

(Main)

2

3 4 ( AudioBox 44VSL)



AudioBox 44VSL

3 4. (channel send),

3 4.

Line 1 2,

3 4.

3 4

3 4.

Output 3

Output

4

3 4.

29

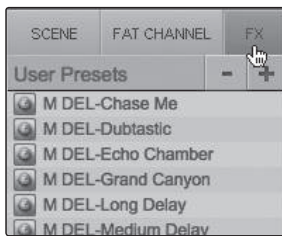
3 Fat Channel



AudioBox 22/44VSL  
 Fat Channel DAW,  
 VSL. Fat Channel Downward Expander ( ),  
 , 3- 5.2 5.3.  
 Overview VSL  
 Fat Channel  
 Fat Channel : Gate ( ), Compressor ( ),  
 EQ ( ).  
 Fat Channel AudioBox 22VSL)



4:



Fat Channel

FX

FX ( ).



AudioBox 44VSL -

3 4



FX A FX B.

- Reverb ( ): Pre delay ( ).
- Reverb: Room size ( ).
- Reverb: Width ( ).
- Delay ( ): Delay Time ( ).
- Delay: Feedback ( ).
- Reverb and Delay ( ): Damping ( ).

AudioBox 44VSL:

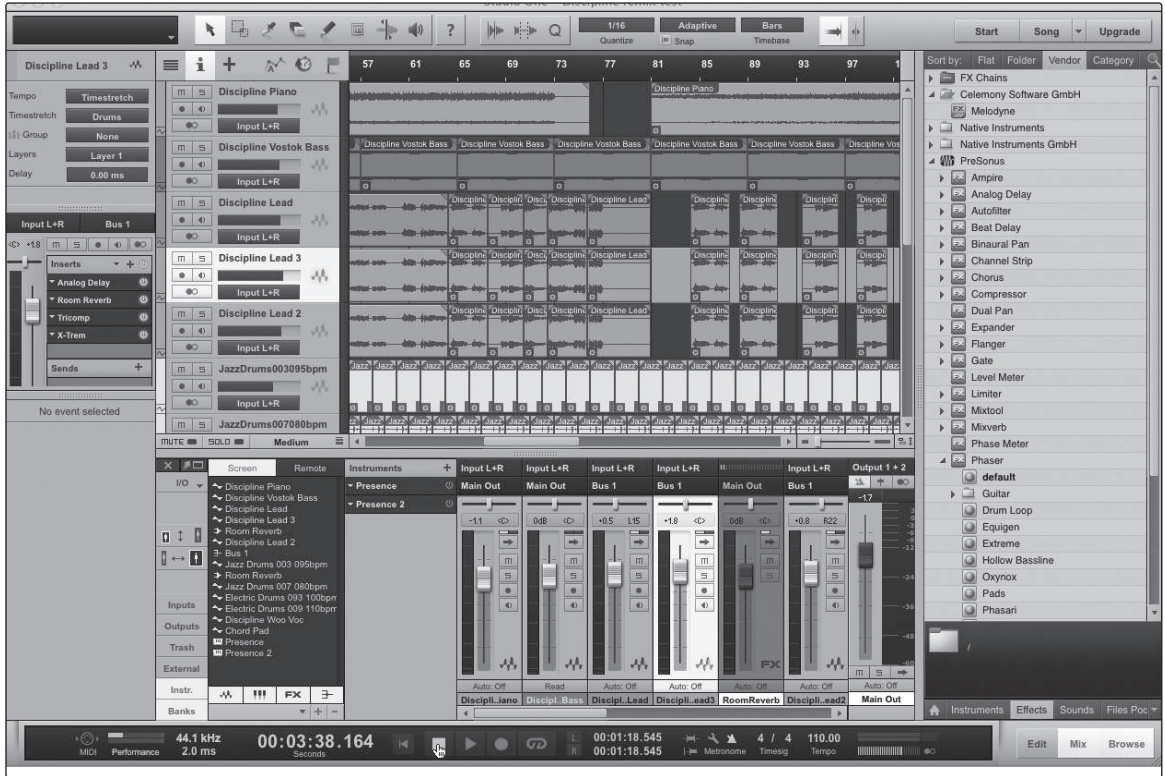
FX A FX B

(Out 3,4 Main)

FXA FXB.



4.2 Studio One Artist



AudioBox 22/44VSL  
Studio One Artist.  
Studio One Artist

Studio One Producer Studio One Professional.  
Studio One,

<http://studioone.presonus.com/>.

4.2.1

22/44VSL  
PreSonus Studio One Artist,  
Studio One Artist, DVD-

Studio One



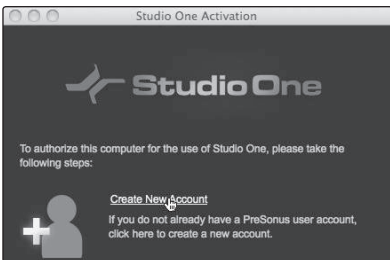
Studio One Artist,

DVD-

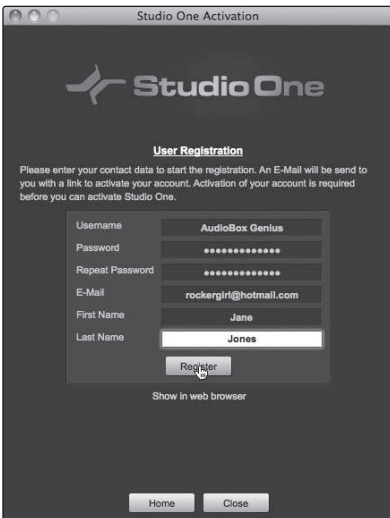
- Windows: -
- Mac: Studio One Artist Mac.  
Applications ( )



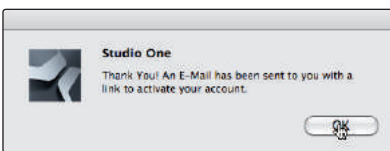
1. Studio One Artist  
 Studio One. Activate ( )  
 Upgrade ( ).



2. Studio One,  
 "Create New Account" ( ),  
 •  
 • "Activating Studio One Artist Offline."  
 PreSonus,  
 "Activating Studio One Artist On Line."



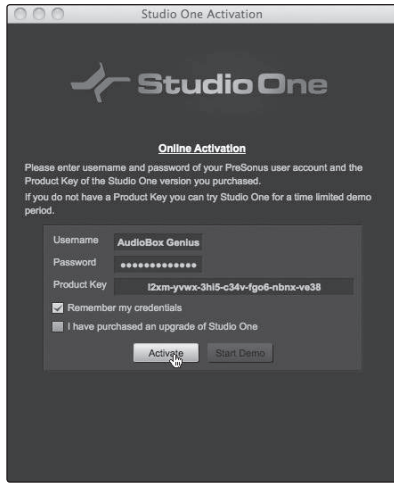
3. PreSonus.  
 PreSonus.  
 PreSonus,  
 PreSonus  
 PreSonus.



4. PreSonus.



- Studio One Artist



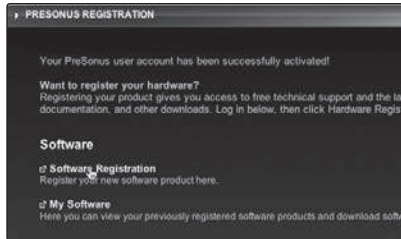
Studio One Artist. Activate Online

Studio One Artist.

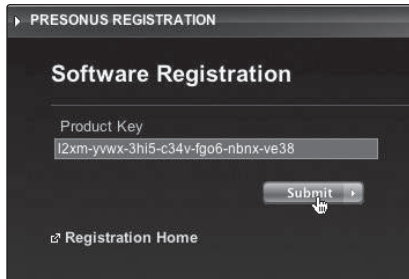
Activate

- Studio One Artist

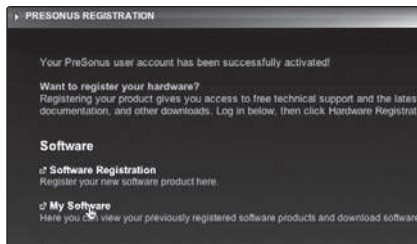
1. <http://www.presonus.com/registration/>



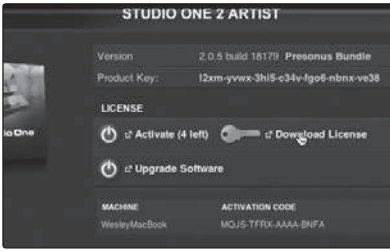
2. Software Registration ( ).



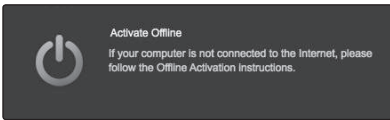
3. "Submit" ( ).



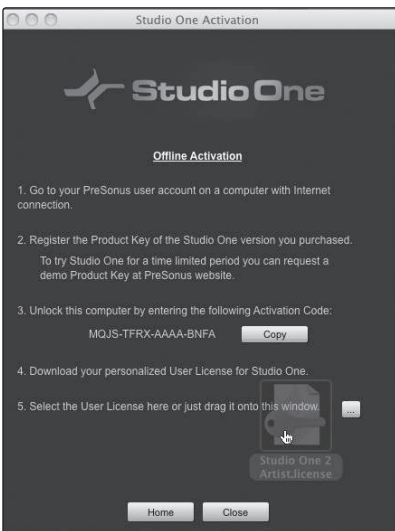
4. "My Software" ( ).



5. "Download License" ( ).  
 "Studio One 2 Artist.license".  
 Studio One Artist.



6. Studio One Artist.  
 Activate Studio One "Activate Offline".



7. "Studio One 2 Artist.license" Offline Activation.

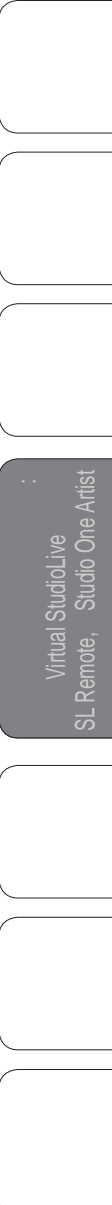
### Studio One Artist

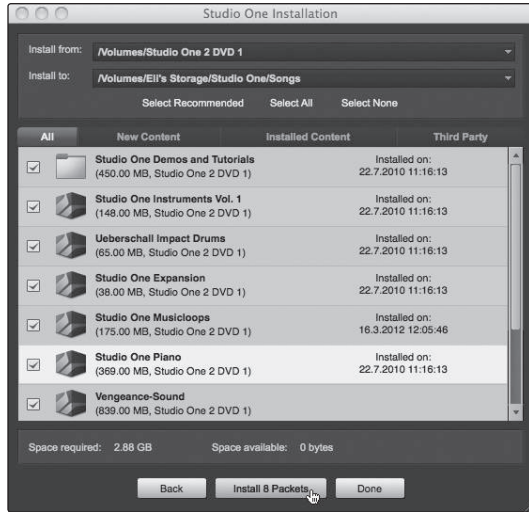


### Studio One Artist

Studio One Artist  
 Studio One.

1. "Install content from DVD or local folder."  
 ( DVD )





2.

DVD,

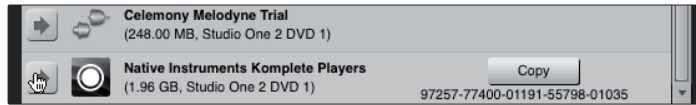
DVD-

Install Packets (

), Done ( ).

Studio One 2> Studio One Installation.

(Celemony Melodyne Trial, Native Instruments Complete Player).



Native Instruments Complete

“Done”.





4.2.2

Studio One Artist PreSonus,  
AudioBox 22/44VSL  
Studio One Artist

Start.

PreSonus.

PreSonus.

Studio One Artist

pdf-

Studio One Artist

: Setup

MIDI

Setup.

Studio One Artist

PreSonus,



Studio One  
"PreSonus AudioBox 22/44VSL",  
Configure Audio Devices ( ),  
Audio Setup Options ( ).

Audio Device ( ) "PreSonus  
AudioBox." Apply ( )

PreSonus AudioBox

MIDI

MIDI

4.4.



### 4.2.3 MIDI

External Devices ( ) Studio One Artist  
MIDI

MIDI

Studio One Artist,

MIDI

MIDI

USB MIDI-

MIDI

MIDI

MIDI

MIDI

Artist

Keyboards ( Studio One ),

MIDI  
Studio One Artist

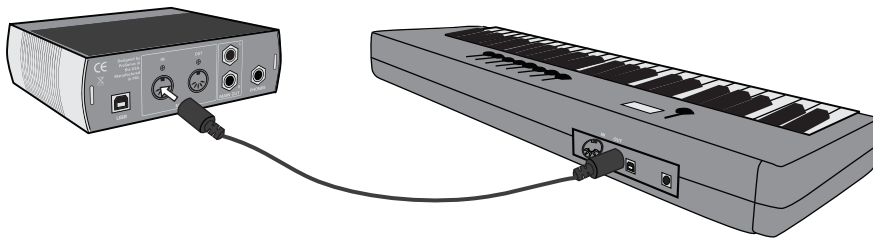
- MIDI

MIDI ( , , . . )

Instrument,

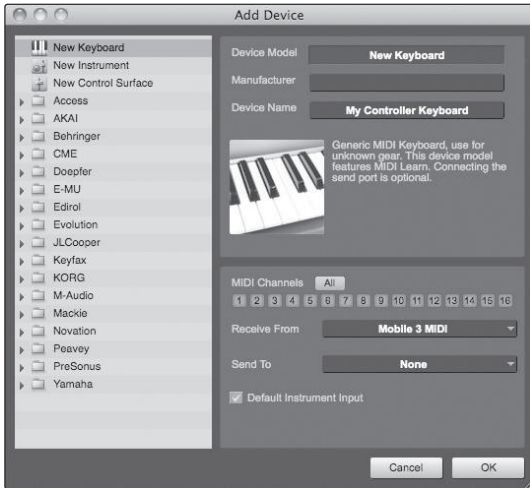
MIDI

Setup



1. MIDI Out MIDI In MIDI AudioBox 22/44VSL USB MIDI

2. Configure External Devices ( ) Setup External Devices.



Add ( ).

3. Add Device ( ).

4. New Keyboard.

5. MIDI, MIDI, 16.

6. MIDI, MIDI, Receive From ( ), Studio One Artis, AudioBox 22/44VSL.

Send To ( ), MIDI, Studio One Artis, MIDI, Studio One, MIDI, MIDI, MIDI, MIDI, MIDI, MIDI.



7. Instrument Input ( ), Default, MIDI.

Studio One Artist. OK.

External Devices

4.2.4.



MIDI

MIDI ( , MIDI- . )  
MIDI ,

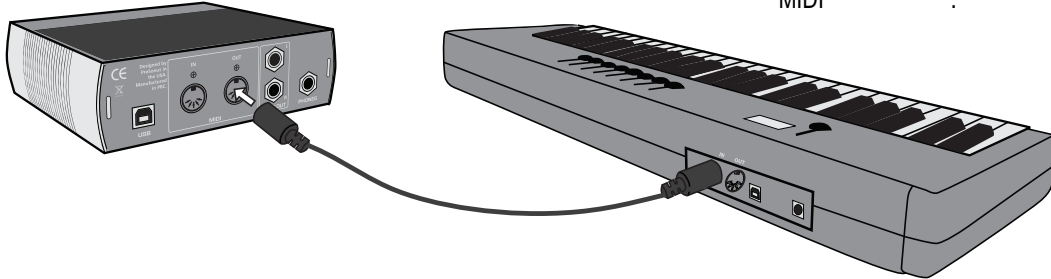
Studio One Artist , ,

Instruments.

MIDI ,

1. MIDI  
MIDI  
MIDI

AudioBox 22/44VSL



2. External Devices  
( ).

Add



3. Add Device ( ).

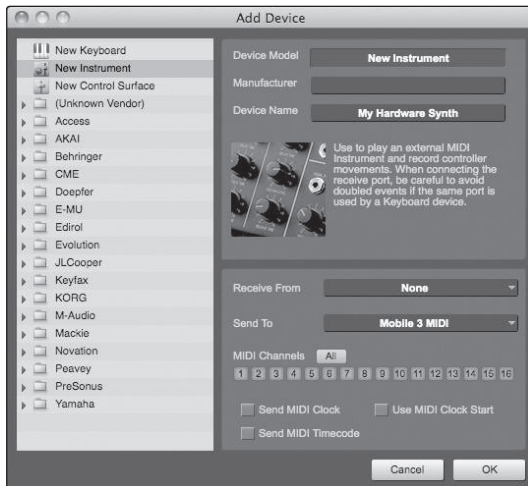
4. "New Instrument."

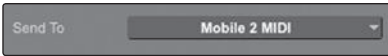
5. , MIDI

MIDI

- 16.

MIDI





6. MIDI Send To ( )  
 MIDI Studio One Artist  
 MIDI AudioBox 22/44VSL.

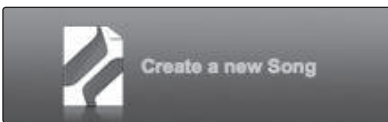
Receive From ( ) MIDI  
 (AudioBox 22/44VSL), Studio One Artist

MIDI Studio One,

External Devices.  
 Studio One Artist.

Studio One Artist.

4.2.4



1. "Create a new Song"  
 ( ).



2. (templates). AudioBox 22VSL 44VSL



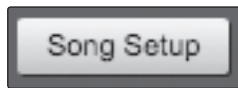
3.  
 4. Empty Song ( ).  
 Notation Bars ( ), Seconds ( ), Samples ( ),  
 Frames( ).

5. Stretch Audio Loops to Song Tempo  
 ( ,  
 BPM ( )





6. Song, Audio Setup ( Studio One | Options... (Windows) Studio One | Preferences (Mac) Audio Setup.



7. Song Setup ( ), Song Setup, Audio I/O Setup. ( / ).

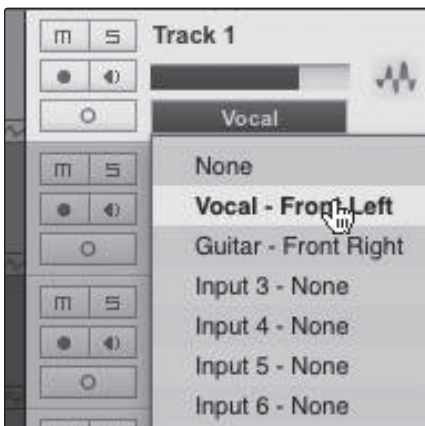
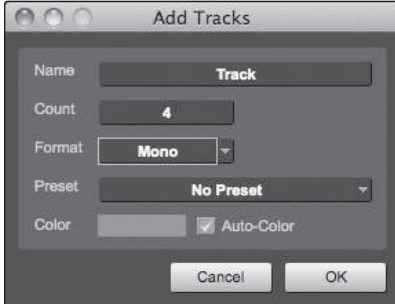
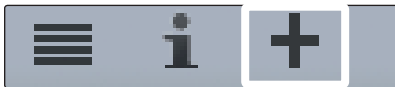


8. Song>Song Setup "Audio I/O Setup."
9. AudioBox 22/44VSL.
- Remove ( ).
- Enter.
10. Studio One Artist, "Make Default".



11. Outputs ( ), AudioBox 22/44VSL.  
 , AudioBox 22/44VSL.
12. Audition  
 ( ).  
 Studio One Artist.
13. Studio One Artist, "Make Default".
14. MIDI  
 Studio One Artist, !

### 4.2.5



1. Arrange ( )  
 Add Tracks  
 ( ).  
 Add Tracks.
2. (Mono Audio ( ), Stereo  
 Audio ( ), Folder ( ), Instrument ( ),  
 Automation ( )),
3. , ,
4. Track | Add Tracks for All Inputs ( |  
 ).
5. 1  
 AudioBox 22/44VSL. Studio One Artist  
 1  
 Studio One Artist

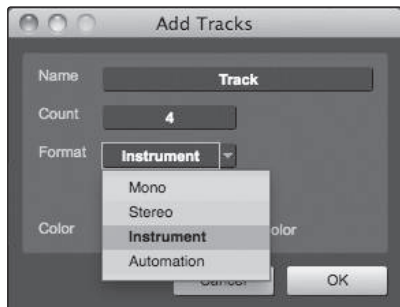


6. AudioBox. 22/44VSL AudioBox.  
AudioBox.

DVD Studio One Artist.



4.2.6 MIDI-



1. Add Tracks ( ).  
Add Tracks, (Instrument)



2. MIDI , MIDI  
3. ,  
4. MIDI MIDI  
Output. MIDI





5. Add Track Inspector.



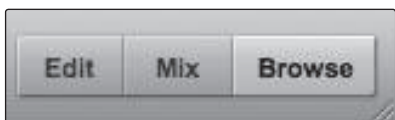
6. Inspector Program. Bank

MIDI

AudioBox,

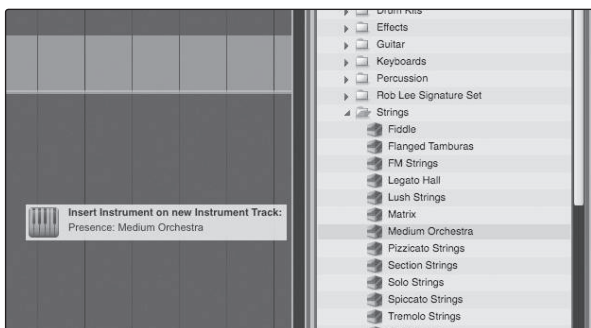
MIDI

### 4.2.7



Edit ( Arrange ( ) )  
MIDI Piano-roll  
Mix  
Browse

, MIDI , ( . pool )



Browse Instrument -

Studio One Artist

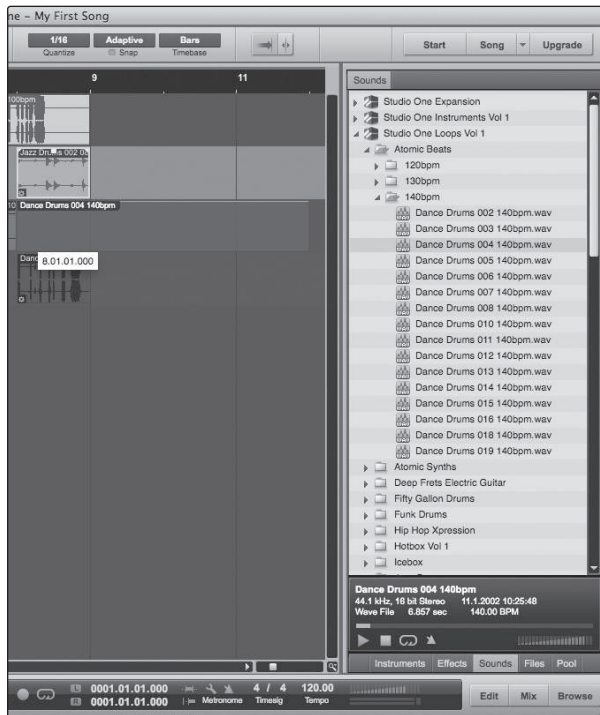
Arrange.

Virtual StudioLive  
SL Remote, Studio One Artist



Effects

### MIDI



MIDI  
Arrange.

(part)



( , USB,

),

### 5.1.4

AudioBox 22/44VSL.



(

).



2,5-5 .

.( " " .)

Virtual StudioLive  
SL Remote, Studio One Artist



12 20 .  
30  
XY  
( .)

( )



2,5 - 5  
AudioBox 22/44VSL.  
AudioBox.

Virtual StudioLive  
SL Remote, Studio One Artist



( XY )



XY.

2-2,5

45

( )



5.2

Virtual StudioLive (VSL). AudioBox 22/44VSL  
 Fat Channel. VSL  
 PreSonus VSL Fat Channel.

5.2.1

?

-92 dBu, +24 dBu, 24+96 = 116

-50 dBu +10 dBu. 60 60

+10 dBu 1000, -50 dBu!

-10 dBu +10 dBu, 20

?

20

-30 dBu +10 dBu. 40 +10 dBu

-30 dBu

10 +5 dBu.

0 dBu +10 dBu.

?

Virtual StudioLive  
 SL Remote, Studio One Artist



Virtual StudioLive  
SL Remote, Studio One Artist

?

?

;

20

..),

(

;-10 dBu,

5.2.2

/

( ).

(

).

/

/



10:1

2:1

( )

( !)

( ) /

( )

( ) /

( ) /

Threshold ( ). Threshold

1:1).

Ratio ( ). ratio -

, ratio

2:1,

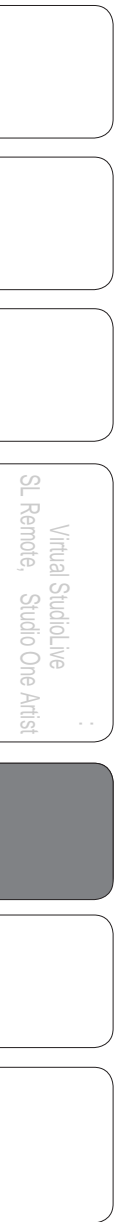
1

0,5 . 0,5

0 , ratio

0 , 0

Virtual StudioLive  
SL Remote, Studio One Artist



Attack ( ).  
( ) (ratio).

Release ( ). release ( )  
" " " " " " " " " " " "

Hard/Soft Knee ( / ).  
( )

Auto ( ).  
Attack Release

Makeup Gain ( ).  
Makeup Gain

Sidechain ( ).  
( )

ratio. 2:1

5 ( 10

Threshold.

Ratio ( ).

1 2:1 4:1 2

Threshold ( )

Gate Threshold ( )

(range).

Attack ( ).

Hold ( ).

Release ( ).

Range ( ).

0

-60

Key Listen ( 60 ).



Virtual StudioLive  
SL Remote, Studio One Artist

range,

(attack).

(hold)

(release).

5.2.3

PreSonus BlueMax.  
VSL.

Soft ( ).

ratio

Threshold	Ratio	Attack	Release
-8,2	1,8:1	0,002	38

Medium ( ).  
Soft,

Threshold	Ratio	Attack	Release
-3,3	2,8:1	0,002	38

Screamer ( ).

Threshold	Ratio	Attack	Release
-1,1	3,8:1	0,002	38

Snare/Kick ( / ).

Threshold	Ratio	Attack	Release
-2,1	3,5:1	78	300

Left/Right (Stereo) Overheads ( ).

Threshold	Ratio	Attack	Release
-13,7	1,3:1	27	128

Electric Bass ( - ).

Threshold	Ratio	Attack	Release
-4,4	2,6:1	45,7	189

Acoustic Guitar ( ).

Threshold	Ratio	Attack	Release
-6,3	3,4:1	188	400

Electric Guitar ( ). (crunch).

Threshold	Ratio	Attack	Release
-0,1	2,4:1	26	193

Piano ( ).

Threshold	Ratio	Attack	Release
-10,8	1,9:1	108	112

Synth ( ).

Threshold	Ratio	Attack	Release
-11,9	1,8:1	0,002	85

Orchestral ( ).

Threshold	Ratio	Attack	Release
3,3	2,5:1	1,8	50

**Stereo Limiter ( )**.  
"brickwall,"

Threshold	Ratio	Attack	Release
5,5	7,1:1	0,001	98

**Contour.**

Threshold	Ratio	Attack	Release
-13,4	1,2:1	0,002	182

**Squeeze.**

"Tele/Strat".

Threshold	Ratio	Attack	Release
-4,6	2,4:1	7,2	93

**Pump.**

Threshold	Ratio	Attack	Release
0	1,9:1	1	0,001



5.3

Fat Channel VSL

3-

5.3.1

?

iPod.

( 3 7 ) .

StudioLive 24.4.2,

( / Q, )

Q,

StudioLive 16.4.2, 16.0.2 AudioBox 22/44VSL,

(High Low Q).

Q

Q

Q,

/

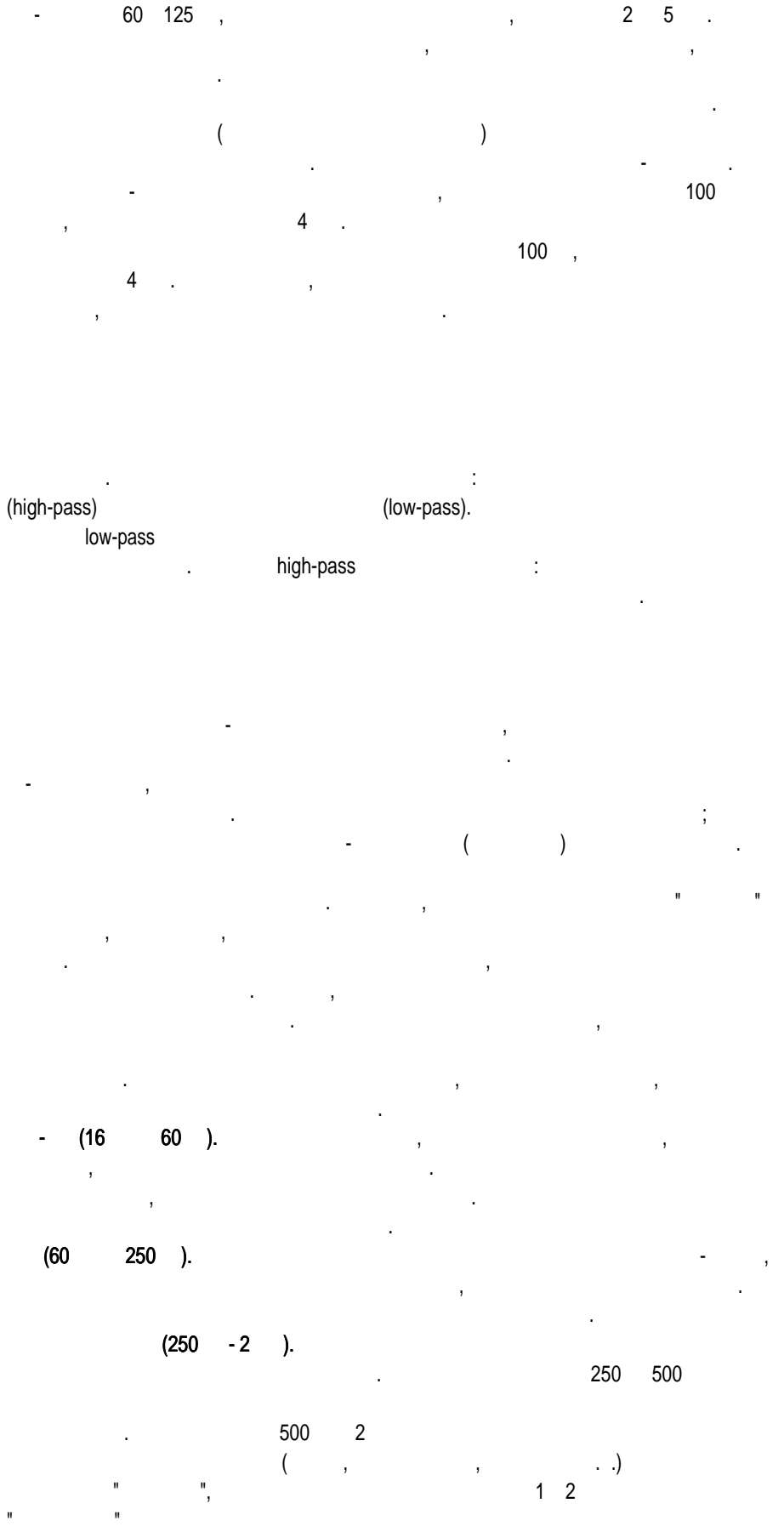
Q,

( Q)

1 )  
filter.

( notch

Virtual StudioLive  
SL Remote, Studio One Artist





(2 -4 ).

(4 -6 ).

5

(6 -16 ).

5.3.2

:

?

( , , , ).

15

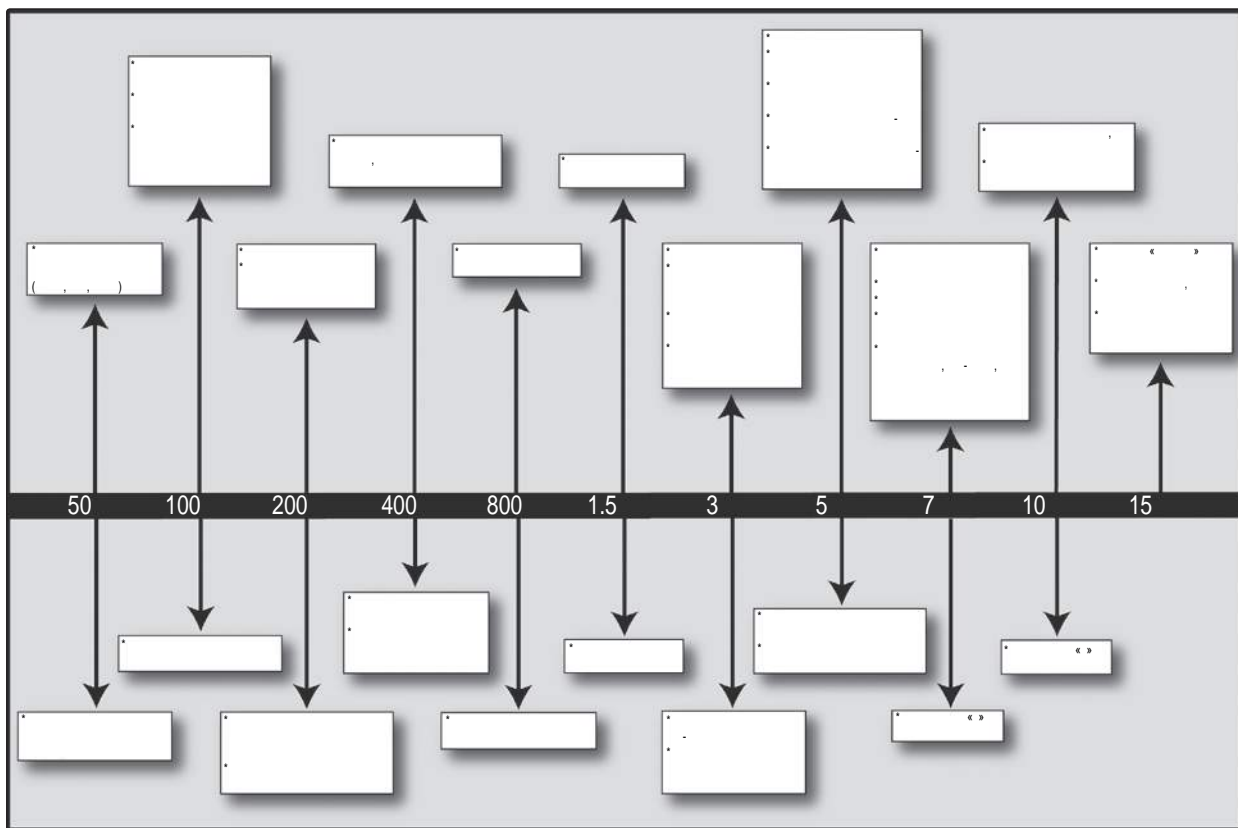
Virtual StudioLive  
SLRemote, Studio One Artist

1

	7		8	
	2		3	
	1		200-400	,
	80			
	1-2	,	5	
	300	,	100	
	1-2		3	
	80		125	
	2-3	,	5	,
	200	,	125	
-	1		600	
	125	,	80	
	600		2-5	
	200	,	125	
	1	,	2	
			150-200	
			80	
	400		2-5	
	80	,	60-125	
	300	,	2-5	
			80-200	
	1	,	7-8	
			8-12	
			15	
	1		8-12	
	120		2	
	3		2	
	120		400-600	

Virtual StudioLive  
SL Remote, Studio One Artist

2



Virtual StudioLive  
SL Remote, Studio One Artist

5.3.3

VSL

Channel Strip.

4.1.5

5.2.3,

LOW ON/OFF	LOW PEAK/SHELF	LOW FREQ (Hz)	LOW GAIN	LOW MID ON/OFF	LOW MID HI/LOW Q	LOW MID FREQ (Hz)	LOW MID GAIN
ON	PEAK	130	-2	ON	LOW	465	-2

HI MID ON/OFF	HI MID LO/HI	HI MID FREQ (kHz)	HI MID GAIN	HI ON/OFF	HI PEAK/SHELF	HI FREQ (kHz)	HI GAIN
ON	LO	2.4	+2	ON	PEAK	6.0	+8

LOW ON/OFF	LOW PEAK/SHELF	LOW FREQ (Hz)	LOW GAIN	LOW MID ON/OFF	LOW MID HI/LOW Q	LOW MID FREQ (Hz)	LOW MID GAIN
ON	SHELF	155	+4	ON	LOW	465	+6

HI MID ON/OFF	HI MID LO/HI	HI MID FREQ (kHz)	HI MID GAIN	HI ON/OFF	HI PEAK/SHELF	HI FREQ (kHz)	HI GAIN
ON	LO	1.4	+6	ON	PEAK	4.2	+2

LOW ON/OFF	LOW PEAK/SHELF	LOW FREQ (Hz)	LOW GAIN	LOW MID ON/OFF	LOW MID HI/LOW Q	LOW MID FREQ (Hz)	LOW MID GAIN
ON	PEAK	225	-2	ON	HI	960	0

HI MID ON/OFF	HI MID LO/HI	HI MID FREQ (kHz)	HI MID GAIN	HI ON/OFF	HI PEAK/SHELF	HI FREQ (kHz)	HI GAIN
ON	LO	2.0	+2	ON	PEAK	7.2	+4

LOW ON/OFF	LOW PEAK/SHELF	LOW FREQ (Hz)	LOW GAIN	LOW MID ON/OFF	LOW MID HI/LOW Q	LOW MID FREQ (Hz)	LOW MID GAIN
ON	PEAK	155	+2	ON	HI	265	-6

HI MID ON/OFF	HI MID LO/HI	HI MID FREQ (kHz)	HI MID GAIN	HI ON/OFF	HI PEAK/SHELF	HI FREQ (kHz)	HI GAIN
ON	HI	2.4	-2	ON	SHELF	7.2	+4

LOW ON/OFF	LOW PEAK/SHELF	LOW FREQ (Hz)	LOW GAIN	LOW MID ON/OFF	LOW MID HI/LOW Q	LOW MID FREQ (Hz)	LOW MID GAIN
ON	PEAK	130	-4	ON	LOW	665	+4

HI MID ON/OFF	HI MID LO/HI	HI MID FREQ (kHz)	HI MID GAIN	HI ON/OFF	HI PEAK/SHELF	HI FREQ (kHz)	HI GAIN
ON	LO	1.6	+4	ON	SHELF	4.2	+4

LOW ON/OFF	LOW PEAK/SHELF	LOW FREQ (Hz)	LOW GAIN	LOW MID ON/OFF	LOW MID HI/LOW Q	LOW MID FREQ (Hz)	LOW MID GAIN
ON	SHELF	108	-2	ON	LOW	385	-2

HI MID ON/OFF	HI MID LO/HI	HI MID FREQ (kHz)	HI MID GAIN	HI ON/OFF	HI PEAK/SHELF	HI FREQ (kHz)	HI GAIN
ON	LO	2.9	+2	ON	SHELF	8	4

LOW ON/OFF	LOW PEAK/SHELF	LOW FREQ (Hz)	LOW GAIN	LOW MID ON/OFF	LOW MID HI/LOW Q	LOW MID FREQ (Hz)	LOW MID GAIN
ON	PEAK	108	+4	ON	HI	265	-4

HI MID ON/OFF	HI MID LO/HI	HI MID FREQ (kHz)	HI MID GAIN	HI ON/OFF	HI PEAK/SHELF	HI FREQ (kHz)	HI GAIN
ON	LO	1.6	0	ON	SHELF	6.0	+4

-

LOW ON/OFF	LOW PEAK/SHELF	LOW FREQ (Hz)	LOW GAIN	LOW MID ON/OFF	LOW MID HI/LOW Q	LOW MID FREQ (Hz)	LOW MID GAIN
ON	SHELF	36	-8	ON	HI	130	+4

HI MID ON/OFF	HI MID LO/HI	HI MID FREQ (kHz)	HI MID GAIN	HI ON/OFF	HI PEAK/SHELF	HI FREQ (kHz)	HI GAIN
ON	LO	2.0	+4	ON	SHELF	4.2	0

LOW ON/OFF	LOW PEAK/SHELF	LOW FREQ (Hz)	LOW GAIN	LOW MID ON/OFF	LOW MID HI/LOW Q	LOW MID FREQ (Hz)	LOW MID GAIN
ON	PEAK	155	+4	ON	LOW	665	+2

HI MID ON/OFF	HI MID LO/HI	HI MID FREQ (kHz)	HI MID GAIN	HI ON/OFF	HI PEAK/SHELF	HI FREQ (kHz)	HI GAIN
ON	LO	2.0	0	ON	SHELF	6.0	+4

LOW ON/OFF	LOW PEAK/SHELF	LOW FREQ (Hz)	LOW GAIN	LOW MID ON/OFF	LOW MID HI/LOW Q	LOW MID FREQ (Hz)	LOW MID GAIN
ON	PEAK	320	+6	ON	LOW	960	0

HI MID ON/OFF	HI MID LO/HI	HI MID FREQ (kHz)	HI MID GAIN	HI ON/OFF	HI PEAK/SHELF	HI FREQ (kHz)	HI GAIN
ON	HI	3.5	+4	ON	SHELF	12	0

LOW ON/OFF	LOW PEAK/SHELF	LOW FREQ (Hz)	LOW GAIN	LOW MID ON/OFF	LOW MID HI/LOW Q	LOW MID FREQ (Hz)	LOW MID GAIN
ON	SHELF	108	-2	ON	LO	665	+2

HI MID ON/OFF	HI MID LO/HI	HI MID FREQ (kHz)	HI MID GAIN	HI ON/OFF	HI PEAK/SHELF	HI FREQ (kHz)	HI GAIN
ON	LO	2.9	+2	ON	PEAK	7.2	+4

5.4

VSL AudioBox 44VSL aux FX A FX B.  
3 4,

5.4.1

( - ).( .)  
Overview VSL. Fat Channel  
16  
Aux 1.  
Aux 1.

5.4.2

VSL  
20-30%.  
FX A FX B



5.5

VSL

Studio One Artist

5.5.1

• Decay ( ) Decay -

1 3

• Predelay ( )

" !"

.(

.)

predelay

• HF and LF decay ( ).

" (LF)

(HF)





### 5.5.2

(delay)

Delay Time ( ).

30 100  
(slap-back),

Feedback ( ).

### 5.5.3

Chorus ( )

LFO Speed and Width ( LFO):  
(LFO).

Depth ( ): depth

Phase ( )

0 360

Flange ( )



:	
	1/4' TRS, , ,
	20 -20 , +/- 0,2
.	+ 0,002%, 1 , 20 , A
/	107 , 1 , . , 20 , .
	+10 dBu
	51
:	
(AB22)	USB, 5 . , 500
:	
:	USB 2.0
	24
	44,1 , 48 , 88,2 , 96
.	6 ,
	114 , .48 , A
	114 , .48 , A
MIDI /	DIN, 5

Virtual StudioLive  
SL Remote, Studio One Artist



:	
	1/4' TRS, ,
.	120 / 60
	20 -20 , +/- 0,5 , .
.	0,01%, 1 , , A ,
	20 , ,
/	96 , 1 , , ,
	20 , ,
:	
	1/4' TRS, , ,
.	20 -20 , +/- 0,25
.	0,003%, 1 , , 22 ,
	A
/	109 , 1 , , 22 ,
	.
	+10 dBu, < 0,5% THD
	51
:	
	2,1 , 12 . , 1
:	
:	USB 2.0
	24
	44,1 , 48 , 88,2 , 96
	6 ,
	114 , . 48 , A
	114 , . 48 , A
MIDI /	DIN, 5



7.0

7.1

(DAW)  
 PreSonus  
 Studio One™  
 PreSonus  
 AudioBox,  
 AudioBox VSL  
 (www.presonus.com),  
 PreSonus 1-225-216-7887,  
 9 17 (GMT -06:00 CST).  
 PreSonus  
 support@presonus.com.

AudioBox  
 USB  
 USB  
 USB 2.0.  
 AudioBox.  
 AudioBox

AudioBox VSL  
 AudioBox VSL  
 AudioBox,  
 USB  
 AudioBox.

VSL  
 VSL AudioBox VSL  
 AudioBox mixer  
 VSL.  
 Fat Channel,

VSL  
 mixer  
 VSL.  
 AudioBox  
 DAW AudioBox VSL,  
 DAW  
 AudioBox VSL,  
 DAW.



7.2

PreSonus AudioBox

PreSonus Audio Electronics, Inc.

(1)

14

PreSonus

PreSonus

PreSonus

PreSonus

PreSonus

PreSonus

PreSonus

PreSonus Audio Electronics, Inc.  
7257 Florida Blvd.  
Baton Rouge, LA 70806

Virtual StudioLive  
SL Remote, Studio One Artist



54, 55  
 Studio One Artist 37  
 Studio One Artist 42-43  
 24  
 54  
 54, 55  
 56  
 24,52  
 56  
 55  
 51  
 55  
 59  
 68  
 69  
 69  
 68  
 69  
 Fat Channel 28  
 29  
 22  
 18  
 Studio One 46  
 23  
 17  
 18

24  
 52-53  
 56  
 54  
 54  
 25, 53  
 Makeup Gain 54  
 MIDI 38  
 MIDI 40  
 69  
 Ableton Live 16  
 Cubase 15  
 Logic 15  
 ProTools 16  
 Sonar 16  
 19  
 20  
 Fat Channel 19  
 19  
 6, 47  
 46  
 Post 23  
 53,55

C  
 67  
 30, 67  
 53, 55  
 53  
 19  
 VSL 19  
 28  
 22  
 22  
 22  
 Fat Channel 20  
 24  
 18  
 62-63  
 18  
 59  
 59  
 60  
 VSL 26  
 54  
 55  
 ( , ) 19  
 18  
 23  
 68





: PreSonus Audio Electronics

: 7257 Florida Blvd., Baton Rouge, LA  
70806 USA

: 225-216-7887

, AudioBox™ 22VSL/AudioBox 44VSL

15 FCC.

:

1.

, ;

2.

, ,

.

:



Baton Rouge • USA • [www.presonus.com](http://www.presonus.com)

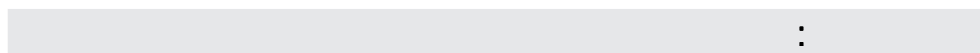


© 2012 PreSonus Audio Electronics, Inc.  
Audio Electronics, Inc.. Studio One Capture  
. Windows -

PreSonus, StudioLive, XMAX, QMix, AudioBox  
PreSonus Software, Ltd. Macintosh -  
Microsoft, Inc.,

PreSonus  
Apple, Inc.,

# AudioBox™ 22/44VSL



15 FCC ( )

- 
- 
- 
- 

PreSonus Audio Electronics FCC

/ B ( , )

**ATTENTION** — Le present appareil numerique n'emet pas de bruits radioelectriques depassant les limites applicables aux appareils numeriques de classe A/de classe B (selon le cas) prescrites dans le reglement sur le brouillage radioelectrique edicte par le ministere des communications du Canada.



7257 Florida Boulevard • Baton Rouge,  
Louisiana 70806 USA • 1-225-216-7887  
[www.presonus.com](http://www.presonus.com)

Part# 820-AB0013-D